

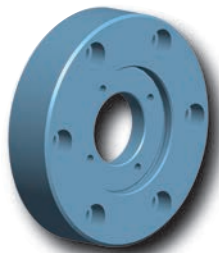
Intermediate Flanges Z ...

for machine connections in accordance to DIN 55026 Form A

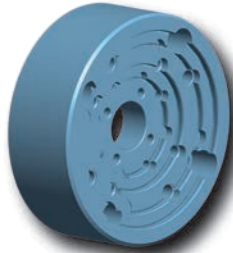
Description

Intermediate Flanges are used as adapters between machine connections in accordance to DIN 55026, sizes A5, A6 or A8 (see the machine connection table) and the RINGSPANN Complete Clamping Fixtures.

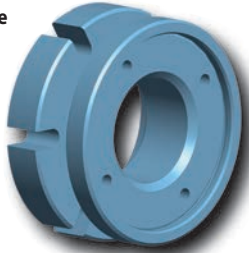
Possible combinations are listed in the table below. Accordingly, a given Intermediate Flange can be used for different Complete Clamping Fixtures.



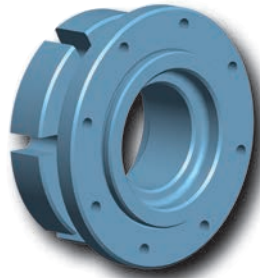
Intermediate Flange type A



Intermediate Flange type C



Intermediate Flange type B



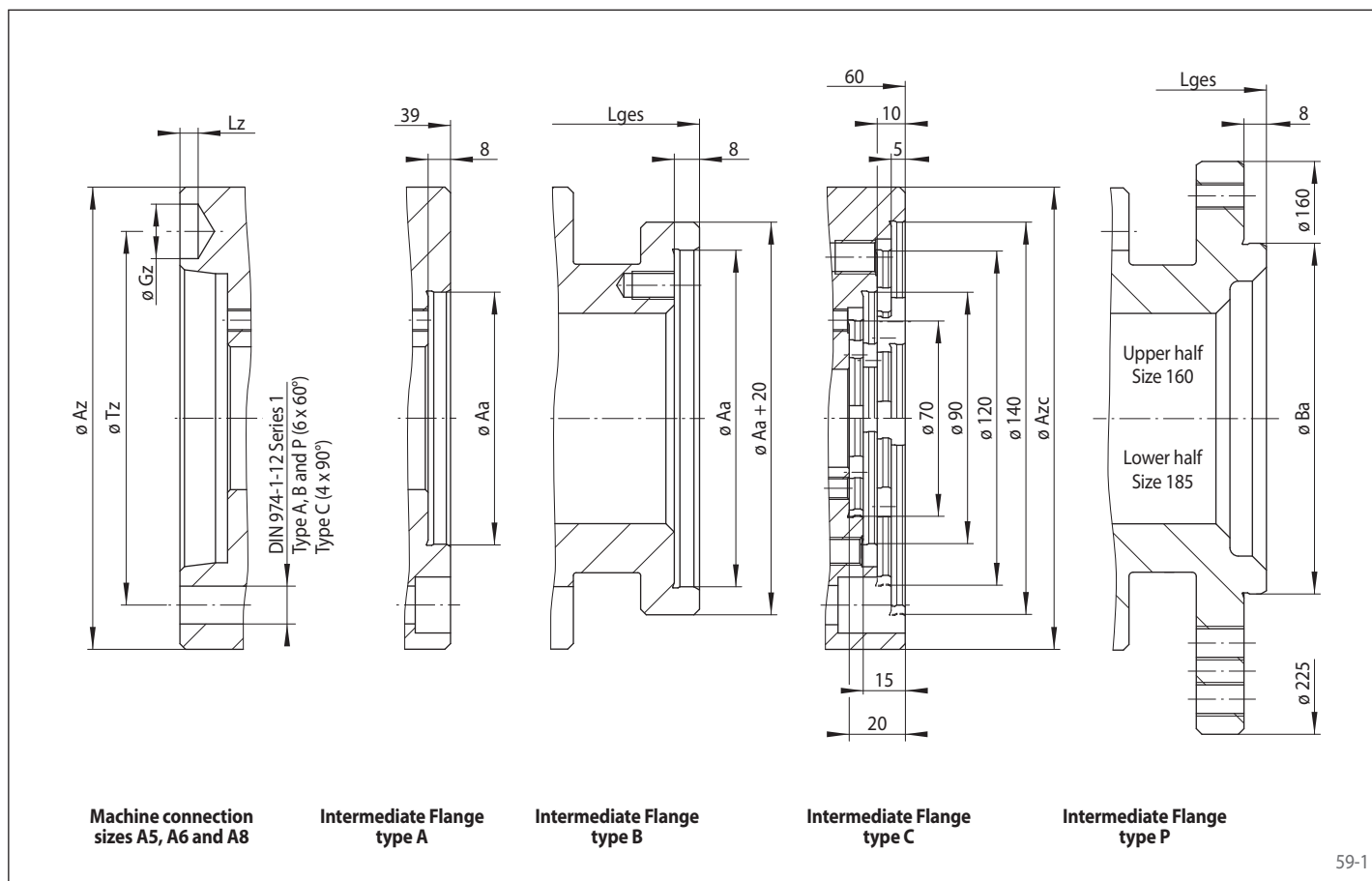
Intermediate Flange type P

58-1

Centring	Intermediate Flange Z			for machine connections in accordance to DIN 55026			for Complete Clamping Fixtures								
	Type	Size	for size Aa* mm	Size A5	Size A6	Size A8	Bonded Disc Pack		Taper Collet		Taper Sleeve		Flat Element		
							Flange Chuck	Flange Mandrel	Flange Chuck	Flange Mandrel	Flange Chuck	Flange Mandrel	Flange Chuck	Flange Mandrel	
at outside diameter Aa	A	70	70	✓	✓	✓		LBDF 11		BKDF 6 BKDF 7 BKDF 12 BKDF 18					
		90	90		✓	✓	LAFF 22 LAFF 32	LBDF 15 LBDF 20 LBDF 25	BKFF 35	BKDF 19 BKDF 27		HKDF 4 HKDF 6 HKDF 7 HKDF 12			
		120	120			✓	LAFF 42	LBDF 30 LBDF 35 LBDF 40 LBDF 45	BKFF 44 BKFF 56	BKDF 32	HKFF 40 HKFF 45 HKFF 50	HKDF 19			
	B	90	90	✓			LAFF 22 LAFF 32	LBDF 15 LBDF 20 LBDF 25	BKFF 35	BKDF 19 BKDF 27		HKDF 4 HKDF 6 HKDF 7 HKDF 12			
		120	120	✓	✓		LAFF 42	LBDF 30 LBDF 35 LBDF 40 LBDF 45	BKFF 44 BKFF 56	BKDF 32	HKFF 40 HKFF 45 HKFF 50	HKDF 19			
		140	140	✓	✓	✓	LAFF 52	LBDF 50		BKDF 43 BKDF 44 BKDF 54	HKFF 66 HKFF 76				
	C	70	70 90 120 140	✓	✓	✓	LAFF 22 LAFF 32 LAFF 42 LAFF 52	LBDF 11 LBDF 15 LBDF 20 LBDF 25 LBDF 30 LBDF 35 LBDF 40 LBDF 45 LBDF 50	BKFF 35 BKFF 44 BKFF 56	BKDF 6 BKDF 7 BKDF 12 BKDF 18 BKDF 19 BKDF 27 BKDF 32 BKDF 43 BKDF 44 BKDF 54	HKFF 40 HKFF 45 HKFF 50 HKFF 66 HKFF 76	HKDF 4 HKDF 6 HKDF 7 HKDF 12 HKDF 19			
	in bore diameter Ba	P	160	160	✓	✓	✓	LAFF 62	LBDF 60 LBDF 70	BKFF 79		HKFF 86 HKFF 96	HKDF 30 HKDF 40		
			185	185 200 225	✓	✓	✓	LAFF 80 LAFF 90 LAFF 100	LBDF 80 LBDF 90 LBDF 100	BKFF 110		HKFF 106 HKFF 114 HKFF 124 HKFF 134 HKFF 150	HKDF 60	KFFF 110 KFFF 120 KFFF 130 KFFF 140	KDFD 110 KDFD 120 KDFD 130

* Corresponds to diameter Aa of the Precision Clamping Fixture.

for machine connections in accordance to DIN 55026 Form A



59-1

Machine connections in accordance to DIN 55026				
Size	Az mm	Gz mm	Lz mm	Tz mm
A5	135	16,3	6,5	104,8
A6	165	19,45	6,5	133,4
A8	210	24,2	8,0	171,4

Intermediate Flange Z Type B for centring at outside diameter Aa				
Size Aa mm	A5 Lges mm	A6 Lges mm	A8 Lges mm	
90	74			
120	74	75		
140	74	75	81	

Intermediate Flange Z Type P for centring in bore diameter Ba				
Size Aa mm	Ba mm	A5 Lges mm	A6 Lges mm	A8 Lges mm
160	90	74	76	87
185				
200	125	78	80	87
225				

Intermediate Flange Z Type C for centring at outside diameter Aa				
Size	for size Aa mm	A5 Azc mm	A6 Azc mm	A8 Azc mm
70	70			
	90			
	120	160	165	210
	140			

Mounting

We recommend using bolts with strength class 10.9 to mount the Clamping Fixture to the Intermediate Flange and the Intermediate Flange to machine connection.

Example for ordering types A, B and C

Intermediate Flange Z, type C for centring at outside diameter Aa, for machine connections in accordance to DIN 55026 size A8, for size Aa of 120 mm:

- ZCA8 70

Example for ordering type P

Intermediate Flange Z, type P for centring in bore diameter Ba, for machine connections in accordance to DIN 55026 size A6, for size Aa of 185 mm:

- ZPA6 185