

# Brake Caliper DS 160 FEA

spring activated – electrohydraulically released

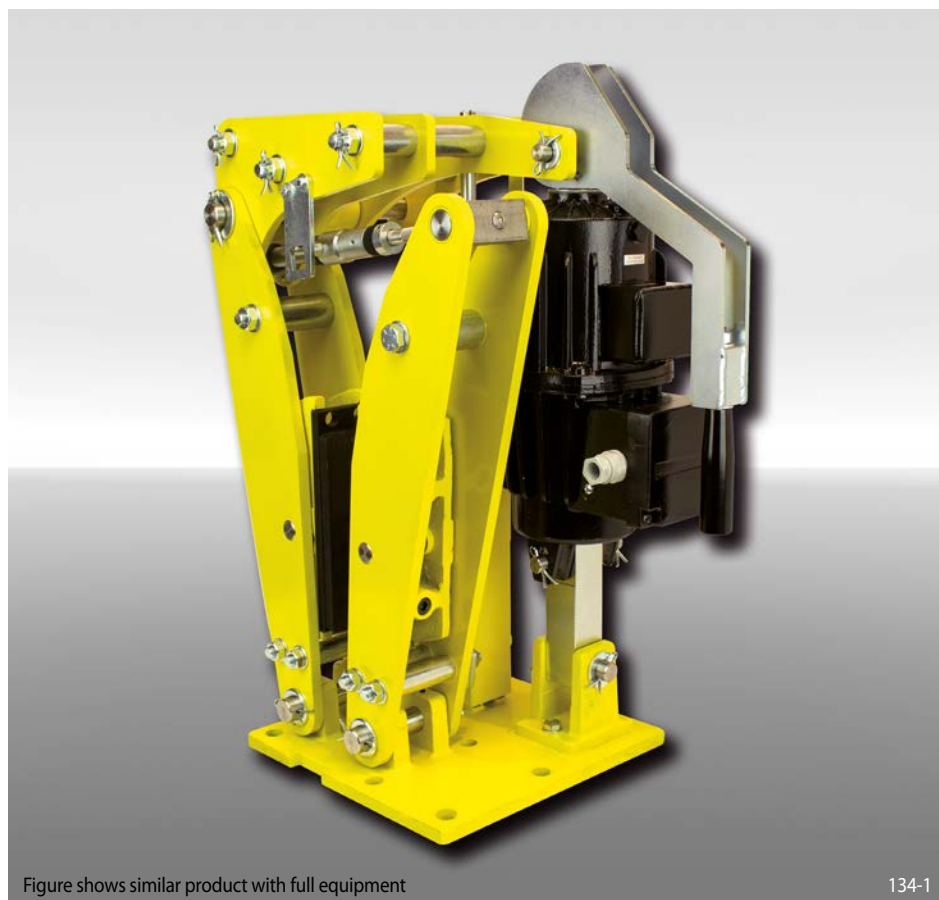


Figure shows similar product with full equipment

134-1

Features	Code
Brake Caliper	D
Disc Brake	S
Frame size 160	160
Spring activated	F
Electrohydraulically released	E
Automatic adjustment to accommodate friction block wear	A
Thrusters 451 or 452 are available	451 452
Thrusters mounted right or left available	R L
Thickness of brake disc 20 mm	20

### Example for ordering

Brake Caliper DS 160 FEA, thruster 452, thruster mounted right, thickness of brake disc 20 mm:

DS 160 FEA - 452 R - 20

## Technical Data

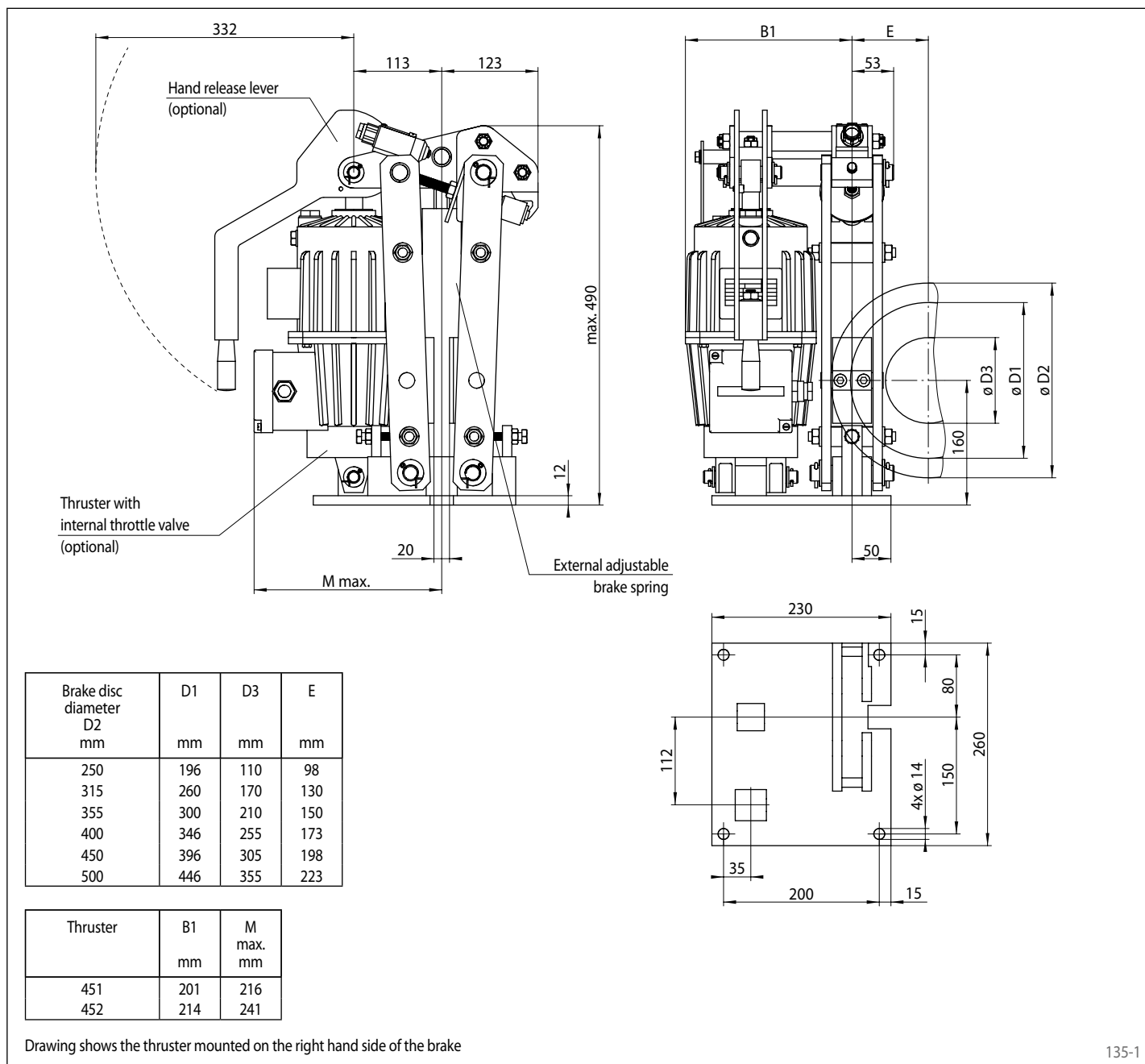
	Brake Caliper DS 160 FEA	
	with thruster 451	with thruster 452
Brake disc diameter	Braking torque	Braking torque
mm	Nm	Nm
250	200	270
315	260	350
355	300	400
400	340	460
450	390	530
500	440	600
Clamping force	2500 N	3400 N
Braking torque adjustable	20 - 100%	20 - 100%
Nominal power	130 W	180 W
Oil volume	1,4 l	2,5 l
Voltage	230/400 V	230/400 V
Weight	40 kg	45 kg

The braking torques shown in the table are based on a theoretical friction coefficient of 0,4.

# Brake Caliper DS 160 FEA

**RINGSPANN®**

spring activated – electrohydraulically released



135-1

## Options

- Micro-switch wear control
- Micro-switch status control
- Micro-switch residual piston stroke warning
- Hand release lever
- Hand release lever with padlock
- Thruster with internal throttle valve
- Thruster in heat resistant design
- Corrosion protected design
- Friction lining of sintered metal
- Pneumatic cylinder instead of thruster
- Thruster also available in other voltages and frequencies